

## PUN Index GME

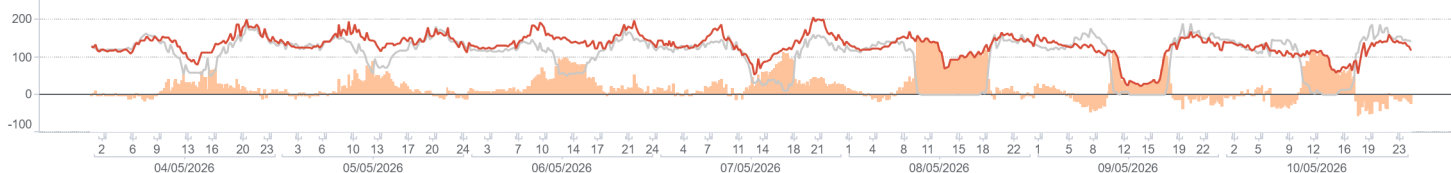
	Average (€/MWh)	Change (€/MWh)	Change (%)
<b>Baseload</b>	131,47	22,98	21,2%
<i>Peak</i>	136,02	34,51	34,0%
<i>Off-peak</i>	128,94	17,66	15,9%
<b>Maximum</b>	205,74		
<b>Minimum</b>	25,00		

## Volumes

	GWh	Average (GWh)	Change (%)
<b>Total supply</b>	National: 7.551	11,2	-4,8%
	Foreign: 1.075	1,6	-3,3%
	<b>Total: 8.626</b>	<b>12,8</b>	<b>-4,6%</b>
<b>Sales</b>	National: 4.098	6,1	6,7%
	Foreign: 1.060	1,6	-4,0%
	<b>Total: 5.158</b>	<b>7,7</b>	<b>4,3%</b>
<b>Purchases</b>	National: 5.016	7,5	4,2%
	Foreign: 143	0,2	9,1%
	<b>Total: 5.158</b>	<b>7,7</b>	<b>4,3%</b>

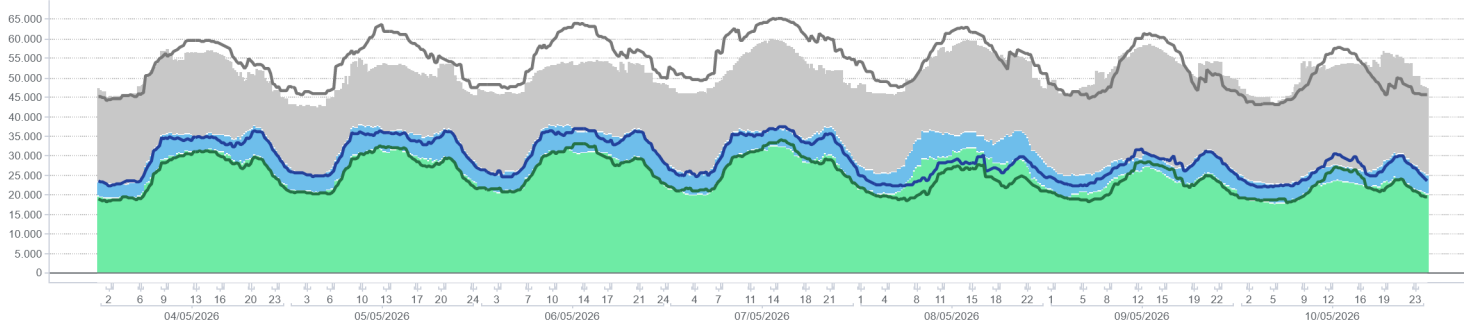
## PUN Index GME (€/MWh)

Price Previous week Price delta



## Volumes Supplied, Sold and Purchased (MW)

Supply Off-IPEX Sales On-IPEX Sales On-IPEX Sales - prev. week Off-IPEX Sales - prev. week Supply prev. week



## Electricity Supply

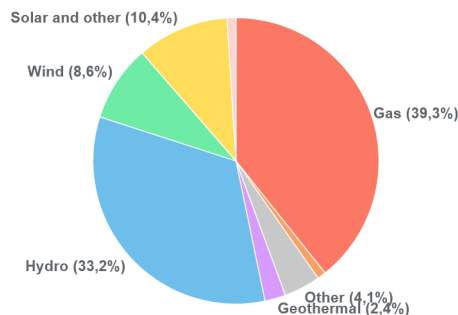
	GWh	Change (%)	Structure
<b>IPEX</b>	<b>4.250</b>	<b>1,4%</b>	<b>82,4%</b>
Market participants	2.614	11,7%	50,7%
GSE	586	-21,8%	11,4%
Foreign zones	1.051	-4,6%	20,4%
Balance of PCE schedules	0		0,0%
<b>PCE (including MTE)</b>	<b>908</b>	<b>20,4%</b>	<b>17,6%</b>
Foreign zones	9	226,1%	0,2%
National zones	899	19,6%	17,4%
Balance of PCE schedules	0		0,0%
<b>VOLUMES SOLD</b>	<b>5.158</b>	<b>4,3%</b>	<b>100,0%</b>
<b>VOLUMES UNSOLD</b>	<b>3.468</b>	<b>-15,3%</b>	
<b>TOTAL SUPPLY</b>	<b>8.626</b>	<b>-4,6%</b>	

## Electricity Demand

	GWh	Change (%)	Structure
<b>IPEX</b>	<b>4.250</b>	<b>1,4%</b>	<b>82,4%</b>
Acquirente Unico	82	-3,8%	1,6%
Other market participants	3.219	6,2%	62,4%
Pumped-storage plants	40	-57,6%	0,8%
Foreign zones	143	9,1%	2,8%
Balance of PCE schedules	767	-9,7%	14,9%
<b>PCE (including MTE)</b>	<b>908</b>	<b>20,4%</b>	<b>17,6%</b>
Foreign zones	0		0,0%
Acquirente Unico - National zones	0		0,0%
Other participants - National zones	1.675	4,5%	32,5%
Balance of PCE schedules	-767	-9,7%	-14,9%
<b>VOLUMES PURCHASED</b>	<b>5.158</b>	<b>4,3%</b>	<b>100,0%</b>
<b>VOLUMES UNPURCHASED</b>	<b>501</b>	<b>24,3%</b>	
<b>TOTAL DEMAND</b>	<b>5.659</b>	<b>5,8%</b>	

## Volumes Sold by Source

	Total (GWh)	Average (GWh)	Change (GWh)	Change (%)
<b>Conventional</b>	<b>1.819</b>	<b>2,7</b>	<b>590</b>	<b>48,0%</b>
Gas	1.611	2,4	562	53,7%
Coal	39	0,1	1	1,9%
Other	169	0,3	27	18,6%
<b>Renewable</b>	<b>2.238</b>	<b>3,3</b>	<b>-325</b>	<b>-12,7%</b>
Geothermal	97	0,1	-3	-3,2%
Hydro	1.362	2,0	-229	-14,4%
Wind	354	0,5	-42	-10,6%
Solar and other	426	0,6	-51	-10,8%
<b>Pumped storage</b>	<b>41</b>	<b>0,1</b>	<b>-7</b>	<b>-13,9%</b>
<b>Total</b>	<b>4.098</b>	<b>6,1</b>	<b>258</b>	<b>6,7%</b>



## Zonal price

	Northern IT		Central-northern IT		Central-southern IT		Southern IT		Calabria		Sicilia		Sardegna	
	€/MWh	Var	€/MWh	Var	€/MWh	Var	€/MWh	Var	€/MWh	Var	€/MWh	Var	€/MWh	Var
<b>Baseload</b>	132,15	21,4%	132,15	21,2%	130,29	20,9%	130,29	20,9%	129,99	20,6%	129,33	20,0%	128,79	19,5%
Peak	137,79	34,4%	137,81	34,4%	132,58	33,2%	132,58	33,2%	131,74	32,4%	129,90	30,5%	132,52	33,2%
Off-peak	129,01	15,8%	129,01	15,6%	129,02	16,2%	129,02	16,2%	129,02	16,2%	129,02	16,2%	126,71	14,1%
<b>Maximum</b>	206,03		206,03		206,03		206,03		206,03		206,03		200,22	
<b>Minimum</b>	25,00		25,00		25,00		25,00		25,00		25,00		0,00	

## Zonal volumes

		Northern IT		Central-northern IT		Central-southern IT		Southern IT		Calabria		Sicilia		Sardegna	
		GWh	Var	GWh	Var	GWh	Var	GWh	Var	GWh	Var	GWh	Var	GWh	Var
<b>Total supply</b>	Total	4.126	-111	384	-34	815	-164	653	-128	543	8	718	74	312	-23
<b>Sales</b>	Total	2.097	306	301	-4	482	-71	454	-63	248	41	313	64	204	-15
<b>Purchase</b>	Total	2.888	168	441	16	872	29	300	5	89	-1	277	-5	149	-12
<b>Total supply</b>	Average	6,1	-2,6%	0,6	-8,0%	1,2	-16,7%	1,0	-16,4%	0,8	1,5%	1,1	11,5%	0,5	-6,9%
<b>Sales</b>	Average	3,1	17,1%	0,4	-1,3%	0,7	-12,8%	0,7	-12,2%	0,4	19,7%	0,5	25,9%	0,3	-6,8%
<b>Purchase</b>	Average	4,3	6,2%	0,7	3,9%	1,3	3,5%	0,4	1,8%	0,1	-1,0%	0,4	-1,8%	0,2	-7,2%

## Volumes sold by Source. Average

		Northern IT		Central-northern IT		Central-southern IT		Southern IT		Calabria		Sicilia		Sardegna	
		GWh	Var	GWh	Var	GWh	Var	GWh	Var	GWh	Var	GWh	Var	GWh	Var
<b>Conventional</b>		1,5	70,4%	0,2	28,9%	0,2	27,2%	0,3	18,1%	0,2	49,0%	0,2	57,1%	0,2	2,5%
Gas		1,4	79,3%	0,2	31,1%	0,2	37,2%	0,2	21,7%	0,2	50,6%	0,1	20,7%	0,1	2,7%
Coal		-	-	-	-	-	-	-	-	-	-	-	-	0,1	1,9%
Other		0,1	3,8%	0,0	-25,0%	0,0	-11,5%	0,0	-3,5%	0,0	33,9%	0,0	647,2%	0,0	3,2%
<b>Renewable</b>		1,6	-8,6%	0,3	-12,5%	0,5	-24,3%	0,4	-25,7%	0,1	-11,2%	0,3	14,6%	0,1	-15,7%
Geothermal		-	-	0,1	-3,2%	-	-	-	-	-	-	-	-	-	-
Hydro		1,3	-10,3%	0,1	-24,1%	0,3	-22,5%	0,2	-24,5%	0,1	-9,1%	0,1	0,2%	0,0	-33,4%
Wind		0,0	4,6%	0,0	55,4%	0,1	-19,7%	0,2	-27,5%	0,1	-15,3%	0,1	47,6%	0,0	13,1%
Solar and other		0,3	-1,5%	0,0	-10,0%	0,1	-31,6%	0,0	-20,2%	0,0	-2,7%	0,1	1,4%	0,1	-16,8%
Pumped storage		0,1	-9,5%	-	-	0,0	-46,0%	-	-	-	-	0,0	-	0,0	-
<b>Total</b>		3,1	17,1%	0,4	-1,3%	0,7	-12,8%	0,7	-12,2%	0,4	19,7%	0,5	25,9%	0,3	-6,8%

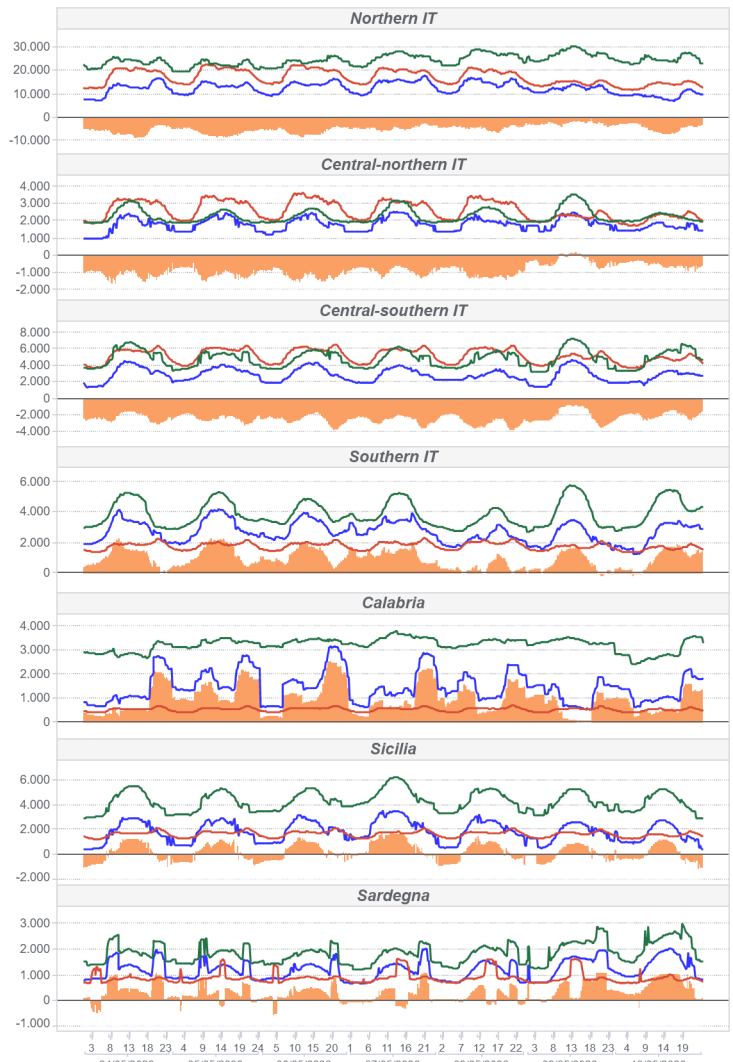
## Zonal Price (€/MWh)

● Price ● Previous week



## Zonal Volumes (MW)

■ Sales ■ Purchases ■ Offers ■ Flow



## Transmissions

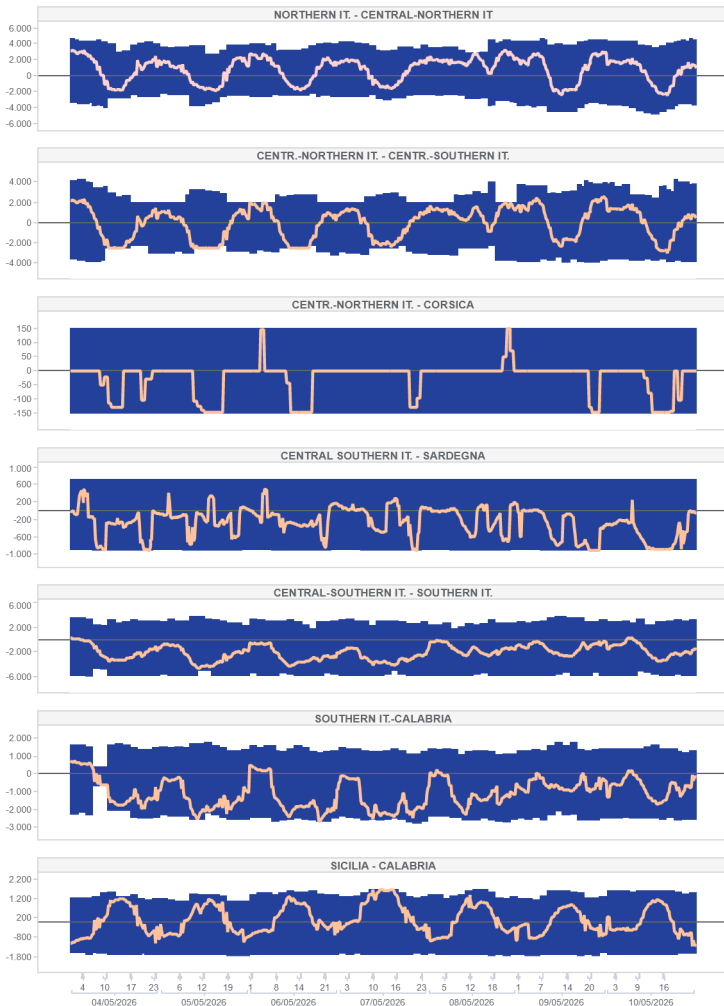
		Direction frequency		Average Physical Transmission Rights Assigned		Average flow		Average use of Physical Transmission Rights Assigned	
		Week n.18	Week n.19	Week n.18	Week n.19	Week n.18	Week n.19	Week n.18	Week n.19
Austria - Northern It.	AUST-NORD	0,0%	0,0%	0	0	0	0		
	NORD-AUST			0	0	0	0		
	FRAN-NORD	95,2%	97,0%	9	10	9	10	100,0%	100,0%
France - Northern It.	NORD-FRAN			0	0	0	0		
	GREC-SUD	0,0%	0,0%	25	25	0	0	0,0%	0,0%
	SUD-GREC			25	25	0	0	0,0%	0,0%
Greece - Southern It.	CSUD-MONT	49,9%	40,8%	636	726	92	269	7,2%	15,1%
	MONT-CSUD	49,1%	59,2%	330	557	407	358	60,5%	38,1%
	NORD-SLOV			0	0	0	0		
Slovenia - Northern It.	SLOV-NORD	0,0%	0,0%	0	0	0	0		
	NORD-SVIZ	14,4%	3,0%	2.169	2.067	622	277	4,1%	0,4%
	SVIZ-NORD	85,6%	97,0%	2.933	3.277	2.914	2.720	85,0%	80,5%

		Direction frequency		Average limit		Average flow		Saturation frequency	
		Week n.18	Week n.19	Week n.18	Week n.19	Week n.18	Week n.19	Week n.18	Week n.19
Centr.-Northern It. - Centr.-Southern It.	CNOR-CSUD	45,2%	58,5%	3.641	2.783	1.615	1.126	0,0%	0,6%
	CSUD-CNOR	54,8%	41,5%	3.595	3.071	2.144	1.651	12,1%	9,1%
	CNOR-CORS	2,4%	2,4%	150	150	0	105	0,0%	0,6%
Central-Northern It. - Corsica	CORS-CNOR	20,8%	23,2%	150	150	121	118	0,0%	0,0%
	CSUD-SARD	15,5%	24,3%	720	720	209	122	0,0%	0,0%
	SARD-CSUD	84,5%	75,6%	884	887	376	388	1,3%	6,3%
Centro Sud - Sardegna	CSUD-SUD	13,4%	3,3%	3.029	2.948	349	178	0,0%	0,0%
	SUD-CSUD	86,6%	96,7%	5.433	5.552	2.046	2.054	0,0%	0,0%
	CORS-SARD	0,0%	2,4%	150	150	0	86	0,0%	0,0%
Corsica - Sardegna	SARD-CORS	100,0%	97,6%	150	150	45	48	13,7%	16,7%
	CNOR-NORD	46,6%	30,4%	4.033	3.103	1.926	1.323	0,0%	0,0%
	NORD-CNOR	53,4%	69,6%	4.328	3.896	2.135	1.699	0,9%	0,1%
Northern It. - Central-Northern It.	COAC-SARD	0,0%	0,0%	21	18	0	0		
	SARD-COAC	100,0%	100,0%	111	102	12	17	0,0%	0,0%
	CALA-SICI	63,4%	50,9%	1.655	1.658	729	496	0,0%	0,0%
Sicilia - Calabria	SICI-CALA	36,6%	49,1%	1.469	1.421	449	755	0,0%	2,2%
	MALT-SICI	1,0%	0,0%	225	225	3	0	0,0%	0,0%
	SICI-MALT	94,6%	97,2%	225	225	102	97	1,6%	0,6%
Southern It.-Calabria	CALA-SUD	75,3%	89,6%	2.624	2.414	688	1.225	0,0%	1,5%
	SUD-CALA	24,7%	10,4%	1.587	1.399	488	338	0,0%	0,0%

		Direction frequency		Average limit		Average flow		Saturation frequency	
		Week n.18	Week n.19	Week n.18	Week n.19	Week n.18	Week n.19	Week n.18	Week n.19
Coupling - Austria Coupling	COUP-XAUS	27,4%	28,3%	175	157	164	145	26,5%	24,1%
	XAUS-COUP	72,0%	71,3%	461	424	454	391	63,2%	61,8%
	COUP-XFRA	6,7%	6,7%	2.028	1.541	825	0	0,0%	0,0%
Coupling - France Coupling	XFRA-COUP	93,3%	100,0%	3.848	2.915	3.333	2.729	61,9%	86,8%
	BSP-COUP	56,0%	48,1%	529	391	503	366	37,5%	35,1%
	COUP-BSP	43,6%	51,6%	670	653	602	573	35,1%	37,1%
Coupling - Slovenia Coupling	COUP-NORD	100,0%	100,0%	10.000	10.000	3.355	2.848	0,0%	0,0%
	NORD-COUP			10.000	10.000	0	0	0,0%	0,0%
	SUD-XGRE					0	0	0,0%	0,0%
IT Coupling - Northern It.	SUD-XGRE					0	0	0,0%	0,0%
	XGRE-SUD	0,0%	0,0%			0	0	0,0%	0,0%

## National transmissions (MW)

Import Limit Export Limit Flow



## Foreign transmissions (MW)

Net Import Net Import Explicit Auction Export Limit Import Limit

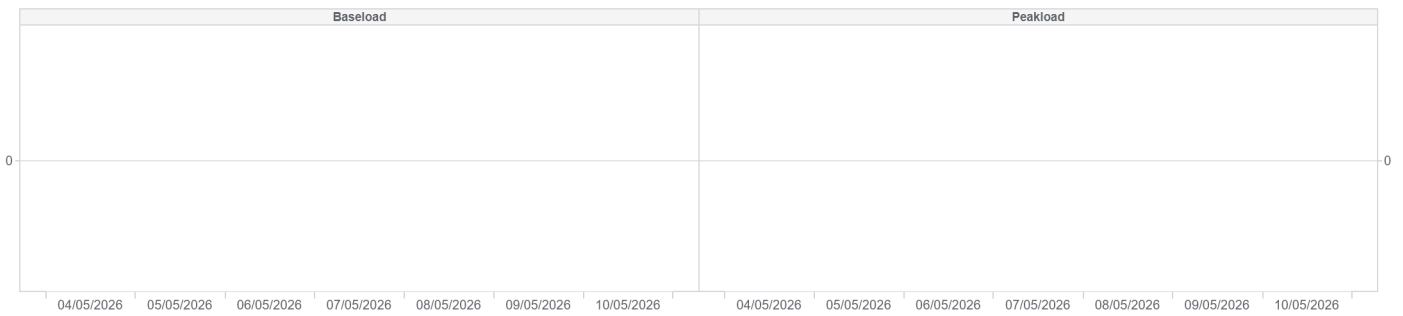


## MPEG

Products	Minimum price (cent. €/MWh)	Maximum price (cent. €/MWh)	Average price (cent. €/MWh)	Volumes (MWh)	Volumes (MWh)	Open position (MW)	Open position (MW)
	BL-2026-05-04						
	BL-2026-05-05						
	BL-2026-05-06						
Baseload	BL-2026-05-07						
	BL-2026-05-08						
	BL-2026-05-09						
	BL-2026-05-10						
	PL-2026-05-04						
	PL-2026-05-05						
Peakload	PL-2026-05-06						
	PL-2026-05-07						
	PL-2026-05-08						

TOTAL

Volumes Average price



## MTE

	Minimum price (€/MWh)	Maximum price (€/MWh)	Control price (€/MWh)	Control price (change)	Trades	Volumes (MWh)	Volumes (MW)	Volumes OTC (MWh)	Volumes OTC (MW)	Volumes (change)	Open position (MW)	Open position (MWh)
Baseload	BL-M-2026-06		117,09	0,0%		0	0	0	0		42	30.240
	BL-M-2026-07		112,91	0,0%		0	0	0	0		0	0
	BL-M-2026-08		123,39	0,0%		0	0	0	0		0	0
	BL-Q-2026-03		136,99	0,0%		0	0	0	0		39	86.112
	BL-Q-2026-04		135,10	0,0%		0	0	1	2.209		37	81.733
	BL-Q-2027-01		124,00	0,0%		0	0	0	0		0	0
	BL-Q-2027-02		93,43	0,0%		0	0	0	0		0	0
	BL-Y-2027		111,01	0,0%		0	0	0	0		3	26.280
Peakload	PL-M-2026-06		112,62	0,0%		0	0	0	0		0	0
	PL-M-2026-07		118,45	0,0%		0	0	0	0		0	0
	PL-M-2026-08		120,15	0,0%		0	0	0	0		0	0
	PL-Q-2026-03		131,10	0,0%		0	0	0	0		0	0
	PL-Q-2026-04		144,62	0,0%		0	0	0	0		0	0
	PL-Q-2027-01		130,26	0,0%		0	0	0	0		0	0
	PL-Q-2027-02		93,41	0,0%		0	0	0	0		0	0
	PL-Y-2027		115,94	0,0%		0	0	0	0		0	0

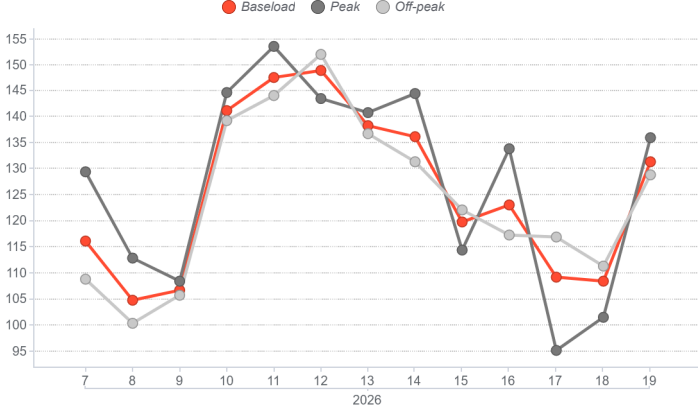
## PCE

	Registered transaction (GWh)	% change	Structure
Baseload	494	9,3%	13,5%
Peak	2	17,9%	0,0%
Non Standard	3147	-1,4%	86,2%
Bilateral	3643	0,0%	99,8%
MTE	8	5,2%	0,2%
<b>Total PCE</b>	<b>3650</b>	<b>0,0%</b>	<b>100,0%</b>
<b>Net position</b>	<b>2331</b>	<b>2,3%</b>	<b>63,9%</b>

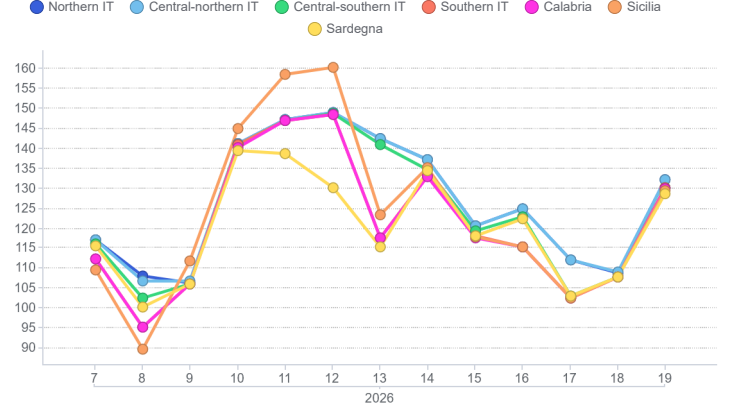
## Programs

Schedules	Injection (GWh)	Injection (change)	Withdrawal (GWh)	Withdrawal (change)
Requested	1.074	5,9%	1.675	4,5%
Rejected	166	-36,2%	0	-48,6%
<b>Registered</b>	<b>908</b>	<b>20,4%</b>	<b>1.675</b>	<b>4,5%</b>
Scheduled deviation	1.423	-6,7%	656	-3,0%
<b>Balance of schedules</b>	<b>0</b>		<b>767</b>	

### MGP - PUN Index GME (€/MWh)



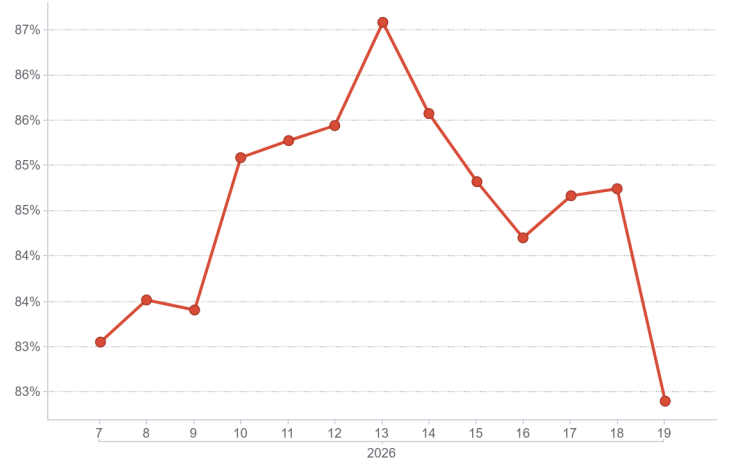
### MGP - Zonal Price (€/MWh)



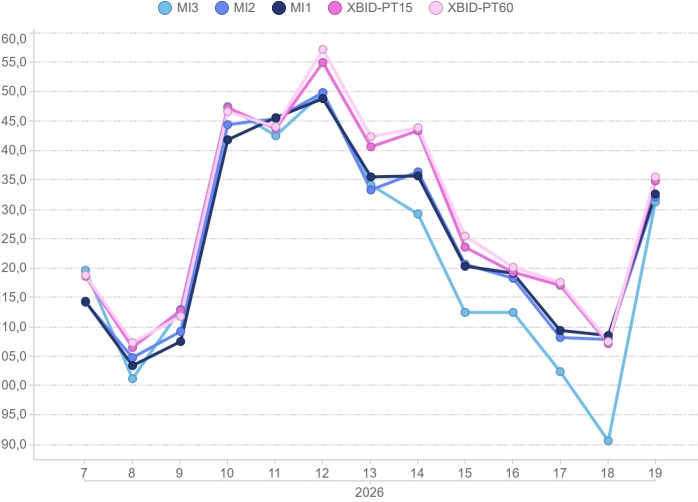
### MGP - Volumes (TWh)



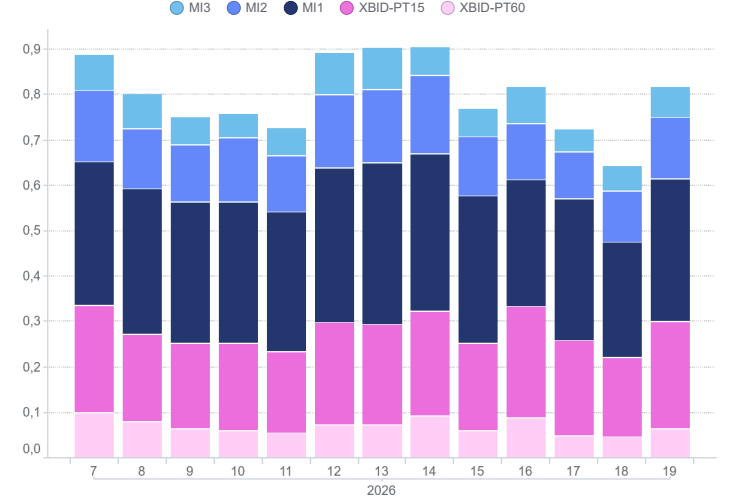
### MGP - Liquidity (%)



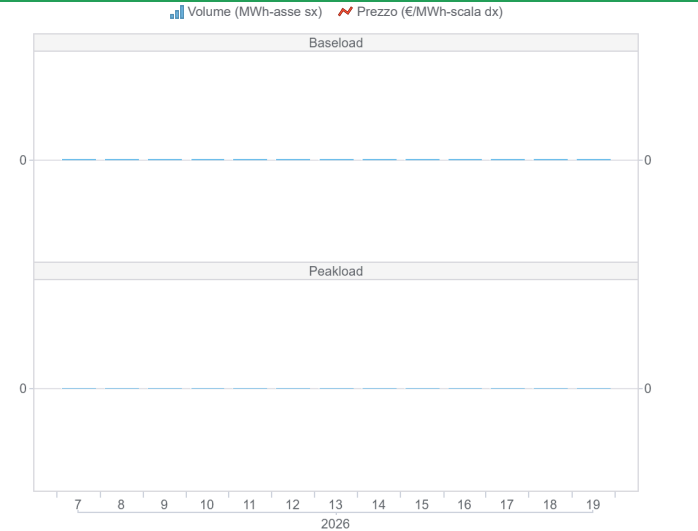
### Intra-Day Market (MI) - Prices (€/MWh)



### MI - Volumes (TWh)



### MPEG



### PCE

